



LAVAL

# PERFORMANCE

4600 SERIES



THERMOPLAST

NEXTRUSIONS

**THERMOPLAST**  
Nextrusions

# Shaping the Future!

**THERMOPLAST** is the industry leader in windows and doors for engineering, innovation, quality, delivery and technical support, PVC recovery and recycling and Carboncare program. With 2 factories and more than 29 extrusion lines, certified test labs, one complete tooling room and the industry's largest technical support team. **THERMOPLAST** is positioned to help door and window manufacturers grow and succeed.

[thermoplast.com](http://thermoplast.com)





LAVAL  
**PERFORMANCE**  
4600 SERIES

## The most complete window system in the industry

The most innovative and energy efficient products on the market, perfectly adapted to your needs and designed for performance and durability.

## Table of contents

Exterior opening windows / fixed .....	4
Sliding & tilt and turn windows .....	6
Aluminum windows .....	8
Performances .....	10
Warranty .....	11
Certifications .....	11



# Exterior opening windows / fixed

## AESTHETICS, COMFORT AND SECURITY

Specially designed to meet market trends, user needs, with sturdy multi-chamber profiles, ensuring an exceptionally solid, energy-efficient window.

- + Rigid welded PVC frame, with or without brickmoulding, plus gypsum and wooden cage for easier insulation
- + Rigid PVC welded sash providing superior strength and durability
- + Interior panel in the insulated portion of the divider, near natural air convection
- + 90-degree sash opening for a quick and easy cleaning
- + Triple weather-stripping for maximum protection against wind, air and water
- + Sealed double or triple energy-efficient glass unit for greater comfort
- + Wide choice of options for interior and exterior finishing



## LAVAL PERFORMANCE 4600 SERIES

### IG CONFIGURATION

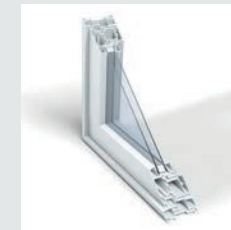


**Double glazing**  
7/8" (22.2mm)

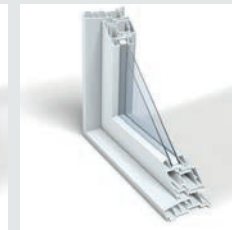


**Triple glazing**  
1 1/4" (32mm)

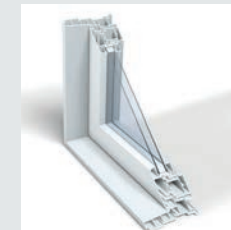
### CHOICE OF FRAMES



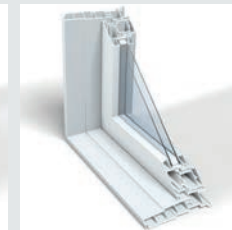
3 1/4"



4 1/2"



5 1/4"

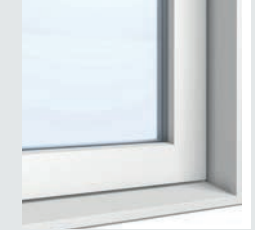


6 9/16"

### CHOICE OF PANELS



Colonial



Contemporary



# Slider & hung windows

## EXCELLENT QUALITY / PRICE RATIO

The single and double sliding and hung windows series are perfect for tight spaces. Narrow Profiles allow maximum light access and provide unencumbered visibility outside.

- + Rigid welded PVC frame, with or without brickmoulding, plus gypsum and wooden cage
- + Interior panel in the insulated portion of the divider, near natural air convection
- + Triple weather-stripping for maximum protection against wind, air and water
- + Panel open 90 for simpler cleaning and greater security
- + Tandem caster panels to facilitate sliding
- + Sealed double or triple energy-efficient glass unit for greater comfort
- + Wide choice of options for interior and exterior finishing
- + Central latch with secure cam
- + Lifting handle built into panel



**THERMOPLAST**  
NEXTRUSIONS

LAVAL  
**PERFORMANCE**  
4600 SERIES

### IG CONFIGURATION



**Double glazing**  
7/8" (22.2mm)

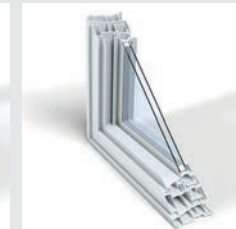


**Triple glazing**  
1 1/4" (32mm)

### CHOICE OF FRAMES



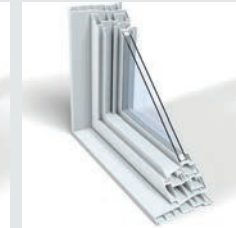
3 1/4"



4 1/2"



5 1/4"



6 9/16"





# Aluminum windows

## THE HYBRID WINDOW SYSTEM COMBINES THE BEST OF BOTH WORLDS

- + The aesthetics and durability of the aluminum
- + The energy efficiency, ease of assembly and virtually maintenance-free qualities of PVC

THE ALUMINUM WINDOWS OFFERING EXCEPTIONAL PERFORMANCE ARE AVAILABLE IN DIFFERENT MODELS:

Outdoor Aluminum & Indoor PVC	Outdoor & Indoor Aluminum
<ul style="list-style-type: none"> <li>• Casement / awning / fixed</li> <li>• Hung</li> <li>• Sliding</li> </ul>	<ul style="list-style-type: none"> <li>• Casement / awning / fixed</li> <li>• Option: Interior opening</li> </ul>

THERMOPLAST's Performance series is NAFS-11/17 certified (commercial windows) AND CAN BE USED IN THE FOLLOWING PROJECTS:

• Residential & multi-level	• Institutional	• Commercial
-----------------------------	-----------------	--------------

- + The aluminum frame profiles are mechanically fastened with steel screws through integrated grooves for maximum strength.
- + The aluminum sash profiles are assembled with adjustable corner keys for a perfect fit and finish.
- + Double or triple energy glass unit for greater comfort
- + Different mullion combination (structural or modular)
- + High range of hardware available
- + Robust aluminum screen
- + The **vinyl profile window thermal insulation system** is fusion welded, contributing to maximum protection against air and water infiltration.



## LAVAL PERFORMANCE 4600 SERIES

### IG CONFIGURATION

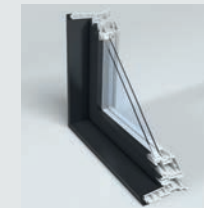


**Double glazing**  
7/8" (22.2mm)

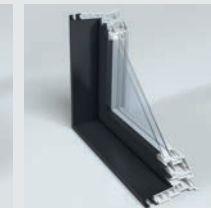


**Triple glazing**  
1 1/4" (32mm)

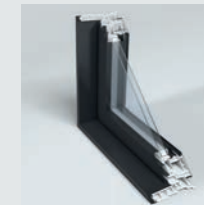
### CHOICE OF FRAMES



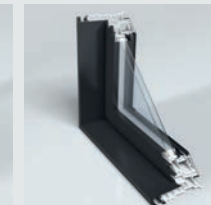
Aluminum-PVC  
5 3/4"



Aluminum-PVC  
6 9/16"



Aluminum-Aluminum  
5 3/4"



Aluminum-Aluminum  
6 9/16"

### CHOICE OF PANELS



Contemporary

# Performances

LAVAL  
PERFORMANCE  
4600 SERIES

## STRUCTURAL

Model	Standards	Air tightness	Water resistance [PA]	Wind-Load Resistance [PA]	Force entry	Rating Size
Fixed	NAFS-AAMA/WDMA/CSA 101/I.S.2/A404-11	A1 A2 <b>A3</b>	140       <b>730</b>	720       <b>4800</b>	F10 <b>F20</b>	CW-PG100-FW (72" X 72")
Casement	NAFS-AAMA/WDMA/CSA 101/I.S.2/A404-11	A1 A2 <b>A3</b>	140       <b>730</b>	720       <b>4800</b>	F10 <b>F20</b>	CW-PG100-C (32" X 63")
Awning	NAFS-AAMA/WDMA/CSA 101/I.S.2/A404-11	A1 A2 <b>A3</b>	140       <b>730</b>	720     <b>2400</b>	F10 <b>F20</b>	CW-PG50-AP (62" X 48")
Single hung	NAFS-AAMA/WDMA/CSA 101/I.S.2/A404-11	A1 A2 <b>A3</b>	140       <b>730</b>	720       <b>4080</b>	F10 <b>F20</b>	R-PG85-H (39" x 63")
Single slider	NAFS-AAMA/WDMA/CSA 101/I.S.2/A404-11	A1 A2 <b>A3</b>	140       <b>620</b>	720     <b>2880</b>	F10 <b>F20</b>	R-PG60-HS (63" x 43")
Aluminum interior opening	NAFS-AAMA/WDMA/CSA 101/I.S.2/A404-11	A1 A2 <b>A3</b>	140       <b>730</b>	720       <b>4800</b>	F10 <b>F20</b>	CW-PG100-DAW (48" X 71")

Products once classified as A, B or C, are now listed by performance grade (PG). The higher the grade, the better the performance. The performance grades above apply to windows the same size as, or smaller than, those indicated.

## THERMAL



**ENERGY STAR CERTIFICATION.** Choose windows with excellent insulation and high energy efficiency to save on heating and make your home more comfortable. Energy efficiency is expressed as **U**, **R** and **ER**. The different glazing options of the performance series allow you to optimize the desired performance

<b>U VALUE</b> HEAT LOSS, SELECT A LOW VALUE.	<b>R VALUE</b> INSULATION AND CORRESPONDS TO 1/U SELECT A HIGH VALUE.	<b>ER VALUE</b> ENERGY EFFICIENCY RATIO HEAT LOSS + INSULATION + SOLAR GAIN, SELECT A HIGH VALUE.
--------------------------------------------------	--------------------------------------------------------------------------	------------------------------------------------------------------------------------------------------





Manufacturer of  
AAMA Certified Profiles,  
an FGIA Program

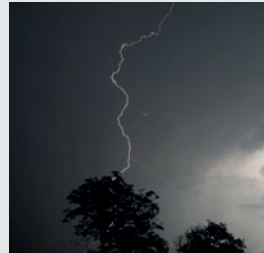
# THERMOPLAST window profiles are AAMA Certified.



**Extreme Heat**



**Rain & Humidity**



**Storms & Wind**



**Cold, Snow and Ice**

## THE AAMA-CERTIFIED

The AAMA Certified Profile Program, an FGIA certification, ensures uniform sizing and strength, heat/impact resistance, absence of lead and weather resistance in extreme heat, rain, humidity, storms, winds, cold, snow and ice.

**THERMOPLAST Nextrusions is one of Canada's only AAMA-Certified Extruders.**

## Certifications

The quality of our window systems out through recognition

by all the major standards associations, which attest to the superiority of THERMOPLAST product performance.



Manufacturer of AAMA Certified Profiles, an FGIA Program



## Our Warranty

Be worry-free by choosing our window systems, which include an exceptional 20-year warranty on our PVC



**THERMOPLAST**  
NEXTRUSIONS



LAVAL  
**PERFORMANCE**  
4600 SERIES



**THERMOPLAST**

NEXTRUSIONS

3035 Le Corbusier Blvd  
Laval (Qc) H7L 3C3

**[www.thermoplast.com](http://www.thermoplast.com)**

T. 450-687-5115

